

MATHEMATICS

Grade 2

**English/
Sepedi**

**Teacher's
Resource**

Pack

2019 TERM 3

Contents

1	Printable Resources	1
	Printable resource sheets	1
1	Multiplication cards (lesson 9 and other) Dikarata tša go atiša (thuto ya 9 le tše dingwe)	2
2	Multiplication cards (lesson 9 and other) Dikarata tša go atiša (thuto ya 9 le tše dingwe)	3
3	Array diagram (lesson 21 and other) Taekramo ya tokologanyo (thuto ya 21 le tše dingwe)	4
4	Multiplication table (lesson 23 and 24) Tafola ya go atiša (thuto ya 23 le 24)	5
5	Shape cut outs (lesson 32 and other) Diripa tša sebopego (thuto ya 32 le tše dingwe)	6
6	Analogue clock (lesson 46 and 48) Sešupanako sa manakana (thuto ya 46 le 48)	7
7	Months of the year vocabulary cards (lesson 47)	8
8	Dikarata tša tlotlontšu ya dikgwedi tša ngwaga (Sepedi) (thuto ya 47)	14
9	Days of the week vocabulary cards (lesson 47)	20
10	Dikarata tša tlotlontšu ya matsatši a beke (Sepedi) (thuto ya 47)	24
2	Written assessments	28
	Written Assessment Lesson 6 Kelo ya go Ngwalwa Thuto ya 6	28
	Written Assessment Lesson 13 Kelo ya go Ngwalwa Thuto ya 13	30
	Written Assessment Lesson 19 Kelo ya go Ngwalwa Thuto ya 19	31
	Written Assessment Lesson 26 Kelo ya go Ngwalwa Thuto ya 26	33
	Written Assessment Lesson 31 Kelo ya go Ngwalwa Thuto ya 31	35
	Written Assessment Lesson 39 Kelo ya go Ngwalwa Thuto ya 39	37
	Written Assessment Lesson 44 Kelo ya go Ngwalwa Thuto ya 44	39
	Written Assessment Lesson 49 Kelo ya go Ngwalwa Thuto ya 49	40

I Printable Resources

Printable resource sheets

This is a list of the mathematical resources that you will need this term. You need to make sure that you have them for the lessons for which they are recommended.

Le ke lenaneo la didirišwa tša mmetse tšeo o tlogo di hloka mo kotareng ye. O swanetše go netefatša go re o na le tšona ge o swaragane le dithutišo tšeo di loketšego go šomišwa le tšona.

1	Multiplication cards (lesson 9 and other) Dikarata tša go atiša (thuto ya 9 le tše dingwe)	2
2	Multiplication cards (lesson 9 and other) Dikarata tša go atiša (thuto ya 9 le tše dingwe)	3
3	Array diagram (lesson 21 and other) Taekramo ya tokologanyo (thuto ya 21 le tše dingwe)	4
4	Multiplication table (lesson 23 and 24) Tafola ya go atiša (thuto ya 23 le 24)	5
5	Shape cut outs (lesson 32 and other) Diripa tša sebopego (thuto ya 32 le tše dingwe)	6
6	Analog clock (lesson 46 and 48) Sešupanako sa manakana (thuto ya 46 le 48)	7
7	Months of the year vocabulary cards (lesson 47)	8
8	Dikarata tša tlotlontšu ya dikgwedi tša ngwaga (Sepedi) (thuto ya 47)	14
9	Days of the week vocabulary cards (lesson 47)	20
10	Dikarata tša tlotlontšu ya matsatši a beke (Sepedi) (thuto ya 47)	24

RESOURCES FOR EACH DAY OF TEACHING

There are also other resources such as informal resources (old magazines, pieces of string, scrap paper, etc.) that you may need in certain lessons. You should have a careful look at the list of resources needed for each lesson; this list is given in the lesson plans each day. Prepare yourself, so that you have the necessary resources for the lessons on a daily basis.

DIDIRIŠWA TŠA TŠATŠI KA TŠATŠI TŠA GO RUTA

Go na le didirišwa tše dingwe gape tšeo di sego molaong (dimakasine tša kgale, diripana tša dithapo, ditshetlana tša pampiri, bjbj.) tšeo o ka di hlokago go dithutišo tše dingwe. O swanetše go ntšha mahlo dinameng go lenaneo la didirišwa tšeo o di hlokago go thutišo ye nngwe le ye nngwe; lenaneo le le filwe ka peakanyong ya dithutišo tša letšatši le lengwe le le lengwe. Itokiše, gore o kgone go ba le didirišwa tšeo di hlokegago tša dithutišo letšatši le lengwe le le lengwe.

1 Multiplication cards (lesson 9 and other)
Dikarata tša go atiša (thuto ya 9 le tše dingwe)

1×1	2×1	3×1
1×2	2×2	3×2
1×3	2×3	3×3
1×4	2×4	3×4
1×5	2×5	3×5
1×6	2×6	3×6
1×7	2×7	3×7
1×8	2×8	3×8
1×9	2×9	3×9

2 Multiplication cards (lesson 9 and other)

Dikarata tša go atiša (thuto ya 9 le tše dingwe)

4×1	5×1
4×2	5×2
4×3	5×3
4×4	5×4
4×5	5×5
4×6	5×6
4×7	5×7
4×8	5×8
4×9	5×9

3 Array diagram (lesson 21 and other)

Taekramo ya tokologanyo (thuto ya 21 le tše dingwe)

	1	2	3	4	5
1	●	●	●	●	●
2	●	●	●	●	●
3	●	●	●	●	●
4	●	●	●	●	●
5	●	●	●	●	●
6	●	●	●	●	●
7	●	●	●	●	●
8	●	●	●	●	●
9	●	●	●	●	●
10	●	●	●	●	●

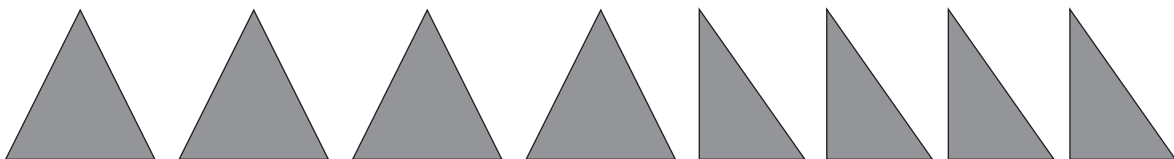
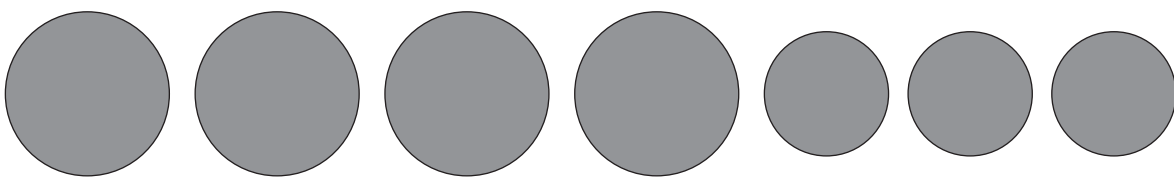
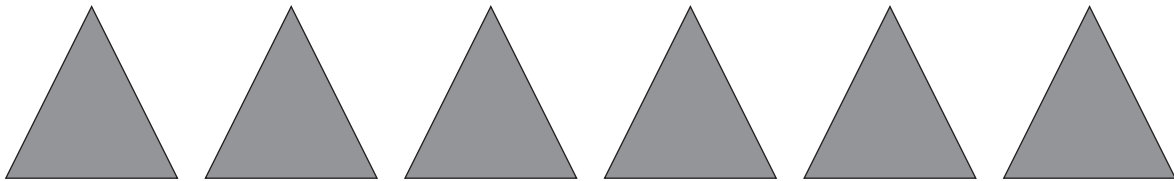
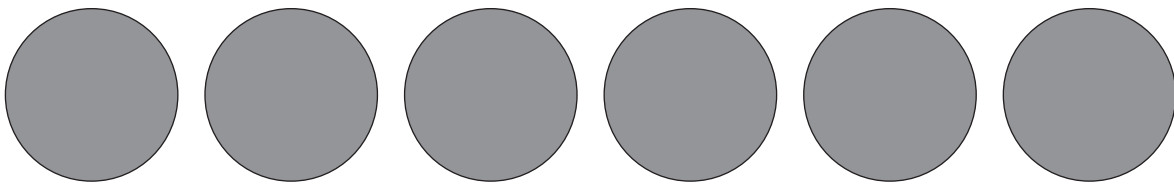
4 Multiplication table (lesson 23 and 24)

Tafola ya go atiša (thuto ya 23 le 24)

	1	2	3	4	5
1	1	2	3	4	5
2	2	4	6	8	10
3	3	6	9	12	15
4	4	8	12	16	20
5	5	10	15	20	25
6	6	12	18	24	30
7	7	14	21	28	35
8	8	16	24	32	40
9	9	18	27	36	45
10	10	20	30	40	50

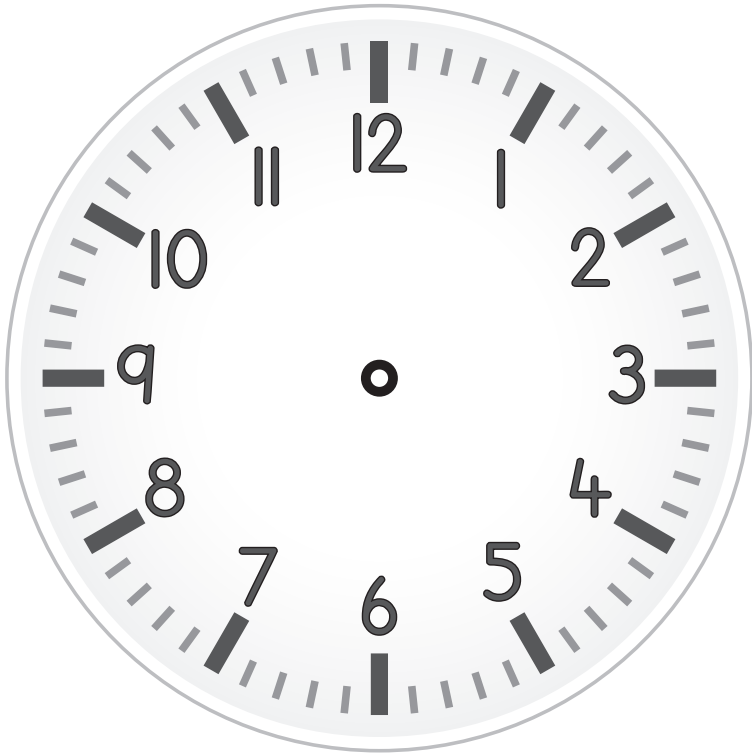

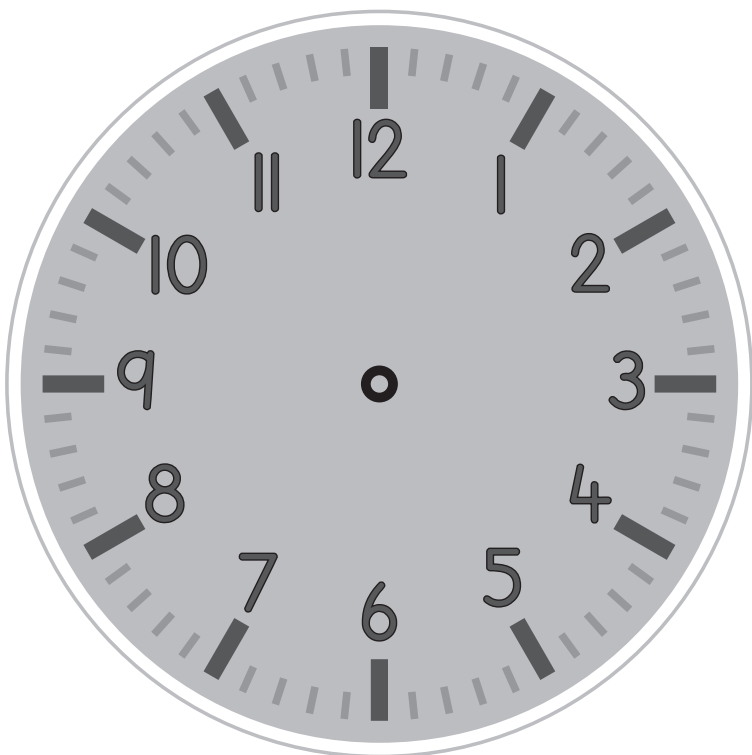

5 Shape cut outs (lesson 32 and other)

Diripa tša sebopego (thuto ya 32 le tše dingwe)



6 Analogue clock (lesson 46 and 48)

Sešupanako sa manakana (thuto ya 46 le 48)

7 Months of the year vocabulary cards (lesson 47)

January

February

March

April

May

June

July

August

September

October

November

December

8 Dikarata tša tlotlontšu ya dikgwedi tša ngwaga
(Sepedi) (thuto ya 47)

Pherekgong

Dibokwane

Hlakola

Mopitlo

Moranang

Ngwatobošego

Mosegamanye

Phato

Lewedi

Diphthane

Dibatsela

Manthole

9 Days of the week vocabulary cards (lesson 47)

Monday

Tuesday

Wednesday

Thursday

Friday

Saturday

Sunday

10 Dikarata tša tlotlontšu ya matšatši a beke
(Sepedi) (thuto ya 47)

Mosupologo

Labobedi

Laboraro

Labone

Labohlano

Mokibelo

Sontaga

2 Written assessments

Written Assessment Lesson 6

Kelo ya go Ngwalwa Thuto ya 6

1 Complete the table.

Feleletša tafola.

(13)

	Groups Dihlopa	Multiplication Katišo	Repeated Addition Tlhakantšhapoeletšo
a	4 groups of 5 Dihlopha tše 4 tša 5	$4 \times 5 = 20$	
b	___ groups of ___ Dihlopha tše ___ tša _____	$9 \times 2 = \underline{\quad}$	
c	7 groups of 3 Dihlopha tše 7 tša 3	$7 \times 3 = \underline{\quad}$	
d	___ groups of ___ Dihlopha tše ___ tša _____	$5 \times 4 = \underline{\quad}$	
e	10 groups of 3 Dihlopha tše 10 tša 3	$10 \times 3 = \underline{\quad}$	

- 2 Draw a diagram to calculate the answer.

Thala taekramo go balela karabo. $7 \times 4 =$ _____ (2)

Written Assessment Lesson 13

Kelo ya go Ngwalwa Thuto ya 13

Complete the table.

Feleletša tafola.

(15)

	Multiplication Katišo	Repeated Addition Tlhakantšhapoeletšo	Answer Karabo
a	4×5	$5 + 5 + 5 + 5$	
b	3×2		
c		$5 + 5 + 5 + 5 + 5 + 5 + 5 + 5 + 5$	
d	6×5		
e		$2 + 2 + 2 + 2 + 2 + 2 + 2 + 2 + 2$	
f	7×5		
g		$2 + 2 + 2 + 2 + 2 + 2 + 2 + 2$	
h	5×2		

Written Assessment Lesson 19

Kelo ya go Ngwalwa Thuto ya 19

I Complete the table.

Feleletša tafola.

(5 × 2=10)

		Number sentence with answer Lefokopalo le karabo
a	7 groups of 2 Dihlopha tše 7 tša 2	
b	5 groups of 3 Dihlopha tše 5 tša 3	
c	6 groups of 5 Dihlopha tše 6 tša 5	
d	9 groups of 4 Dihlopha tše 9 tša 4	
e	10 groups of 3 Dihlopha tše 10 tša 3	

2 Complete the table.

Feleletša tafola.

(5)

	Repeated addition Tlhakantšhapeditšo	Number sentence with answer Lefokopalo le karabo
a	$4 + 4 + 4 + 4 + 4 + 4 =$	
b	$3 + 3 + 3 + 3 =$	
c	$2 + 2 + 2 + 2 + 2 + 2 + 2 + 2 =$	
d	$5 + 5 + 5 + 5 + 5 + 5 + 5 + 5 + 5 =$	
e	$5 + 5 + 5 + 5 + 5 + 5 + 5 =$	

Written Assessment Lesson 26

Kelo ya go Ngwalwa Thuto ya 26

1 Complete the table.

Feleletša tafola.

(8)

		Answer Karabo			Answer Karabo
1	$7 \times 5 =$		5	$5 \times 5 =$	
2	$9 \times 3 =$		6	$8 \times 2 =$	
3	$9 \times 4 =$		7	$9 \times 5 =$	
4	$6 \times 2 =$		8	$7 \times 4 =$	

2 Complete the table.

Feleletša tafola.

(4)

		Answer is the same as: Karabo e swana le:
1	$5 \times 3 = 15$	$3 \times 5 = 15$
2	$4 \times 2 = 8$	
3	$3 \times 5 = 15$	
4	$5 \times 4 = 20$	
5	$2 \times 5 = 10$	

- 3 There are 4 groups. Each group has 5 children in it. How many children are there altogether?

Go na le dihlopha tše 4. Sehlopha se sengwe le se sengwe se na le bana ba 5 mo go sona. Na go na le bana ba bakae ge ba hlakana ka moka?

(3)

Written Assessment Lesson 31

Kelo ya go Ngwalwa Thuto ya 31

1 What fraction of the rectangle is shaded?

Na ke palophatlo efe ya khutlonnethwi yeo e khalarilwego?

(1)



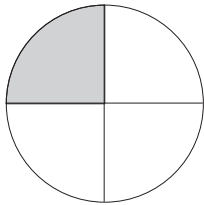
the whole ka moka	one half seripa se tee	one quarter kotara e tee	one eighth tee seswaing
----------------------	---------------------------	-----------------------------	----------------------------

2 What fraction of the circle is shaded? Write your answer as a fraction number.

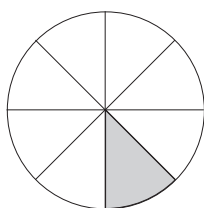
Na ke palophatlo efe ya sediko yeo e khalarilwego? Ngwala karabo ya gago bjale ka palophatlo.

(3)

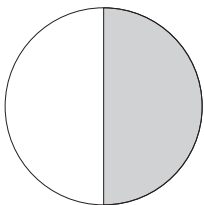
a



b



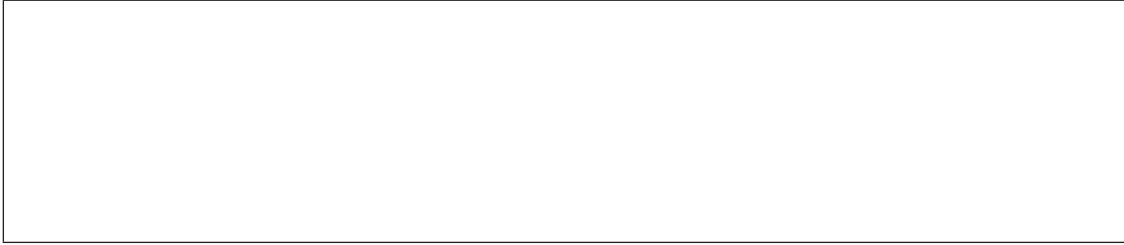
c



- 3 Divide the rectangle into quarters.

Arola khutlonnethwi ka dikotara.

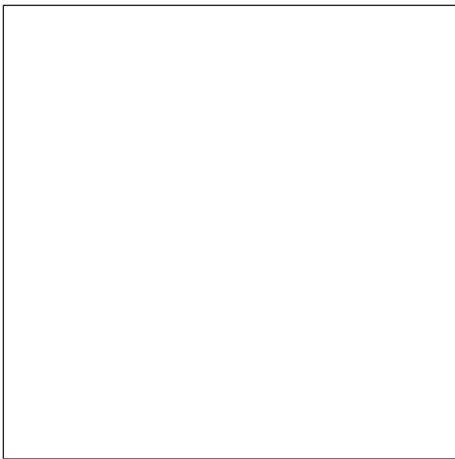
(2)



- 4 Divide the square in half.

Arola sekwere ka bogare.

(2)



- 5 Divide the rectangle into eighths.

Arola khutlonnethwi ka diseswai.

(2)



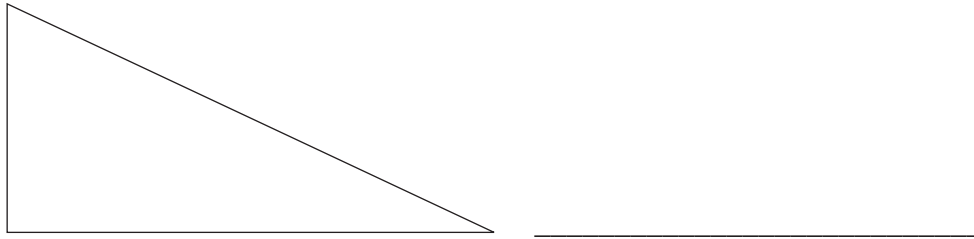
Written Assessment Lesson 39

Kelo ya go Ngwalwa Thuto ya 39

1 Name this shape.

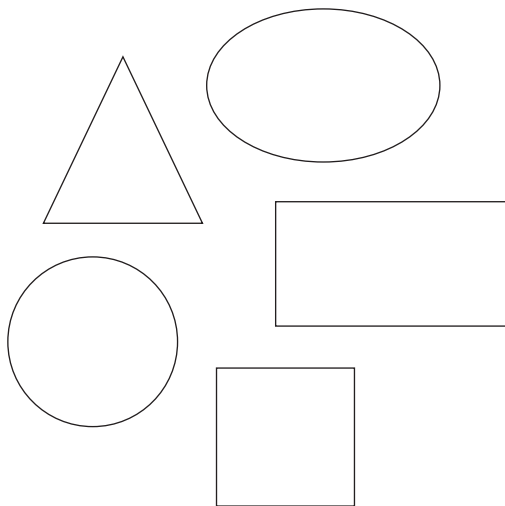
Efa leina la sebopego se.

(1)



2 Look at the picture below.

Lebelela seswantšho sa ka tlase.



a Put a tick on the shapes with straight sides.

Bea leswao godimo ga diboepgo tša mahlakore a thwi.

(3)

b Put a cross on the shapes with shapes have round sides.

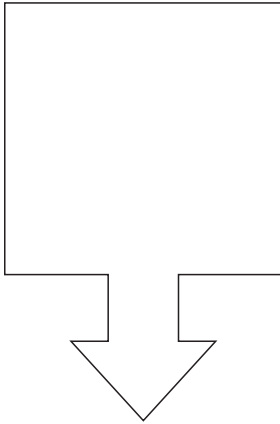
Bea sefapano godimo ga diboepgo tša go ba le mahlakore a nkgokolo.

(2)

- 3 Draw the line of symmetry in the drawing.

Thala mothalo wa go ripa gare ka go lekana mo sethalweng.

(1)



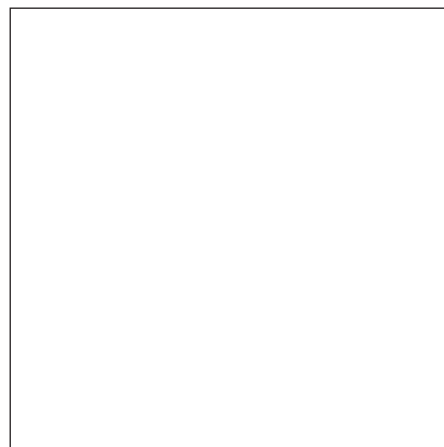
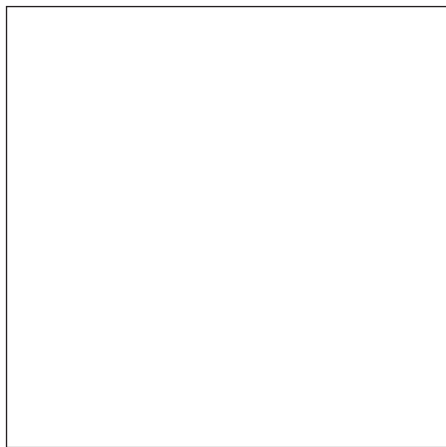
- 4 Draw one shape in each block.

Thala sebopego se tee ka plokong ye nngwe le ye nngwe.

(2)

- a A shape with round sides
Sebopego sa go ba le mahlakore a nkgokolo.

- b A shape with straight sides
Sebopego sa go ba le mahlakore a thwi.



- 5 Draw two circles of different sizes.

Thala didiko tše pedi tša bogolo bja go fapafapana.

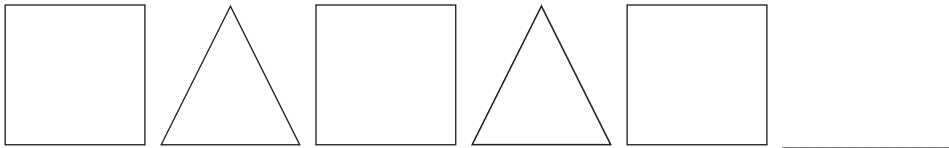
(1)

Written Assessment Lesson 44

Kelo ya go Ngwalwa Thuto ya 44

- 1 Draw the next two shapes in this pattern:

Thala dibopego tše pedi tše di latelago mo patroneng ye: (2)



- 2 Draw a pattern using one triangle and two squares. Repeat the pattern two times.

Thala patrone o šomiša khutlotharo e tee le dikwere tše pedi. Bušetša patrone gabedi. (4)



- 3 Draw the first three steps of a pattern using circles. The number of circles must increase each time.

Thala dikgato tše tharo tša mathomo tša patrone o šomiša didiko. Palo ya didiko e swanetše go oketša nako le nako. (4)

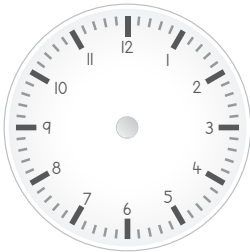


Written Assessment Lesson 49

Kelo ya go Ngwalwa Thuto ya 49

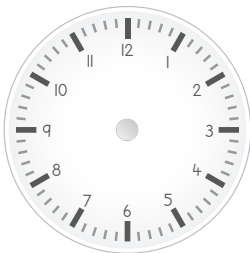
- 1 Draw the long hand and the short hand on this analogue clock to show 5 o'clock.

Thala lenakana le letelele le le le kopana mo sešupanakong se sa manakana go laetša iri ya 5. (2)



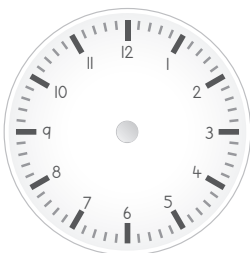
- 2 Draw the hands on this analogue clock to show 9 o'clock.

Thala manakana mo go sešupanako se sa manakana go laetša iri ya 9. (2)



- 3 Draw the arms on this analogue clock to show quarter past six.

Thala manakana mo go sešupanako se sa manakana go laetša kotara go tšwa go iri ya botshelela. (2)



4 What is the time shown on the clock below?

Na sešupanako se sa ka tlase se laetša go re ke nako mang?

(2)



5 How many hours are there between 9 o'clock and 2 o'clock?

Na go na le diiri tše kae magareng ga iri ya 9 le iri ya 2?

_____ (2)

